

MONDAY	
6.30am - 9.00am Main Pool	Lane Swim
9.00am - 10.00am Main Pool	Casual Swim
9.00am - 10.00am Small Pool	Under 8's Fun Swim (1m depth)
10.00am - 11.00am Main Pool	Aqua Fit
10.00am - 11.00am Small Pool	L2S Kids Crash Course
11.00am - 1.30pm Main Pool	Lane Swim
1.45pm - 2.45pm Main & Small Pool	Wet 'n' Wild
3.00pm - 3.30pm Small Pool	Casual Swim
3.00pm - 4.00pm Main Pool	Casual Swim
9.15pm - 10.00pm Main Pool	Lane Swim

TUESDAY	
6.30am - 10.00am Main Pool	Lane Swim
10.00am - 11.15am Main Pool	Ladies Only Swim
10.00am - 11.00am Small Pool	L2S Kids Crash Course
11.00am - 12.00pm Small Pool	Casual Swim
11.15am - 12.00pm Main Pool	Aqua Fit
12.00pm - 1.30pm Main Pool	Lane Swim
12.00pm - 1.30pm Small Pool	Under 8's Fun Swim (0.6m depth)
1.45pm - 2.45pm Main & Small Pool	Under 16's Free Swim
3.00pm - 4.00pm Main & Small Pool	Casual Swim
6.30pm - 9.00pm Main Pool	Casual Swim
7.00pm - 7.45pm Small Pool	Aqua Jog
7.45pm - 8.15pm Small Pool	Aqua HIIT
9.00pm - 10.00pm Main Pool	Lane Swim

WEDNESDAY	
6.30am - 9.00am Main Pool	Lane Swim
9.00am - 10.00am Main Pool	Casual Swim
10.00am - 11.00am Main Pool	Aqua Fit
10.00am - 11.00am Small Pool	L2S Kids Crash Course
11.00am - 11.45am Small Pool	Casual Swim
11.00am - 12.00pm Main Pool	Casual Swim
12.00pm - 1.30pm Main Pool	Lane Swim
12.30pm - 1.30pm Small Pool	Under 8's Fun Swim (1m depth)
1.45pm - 2.45pm Main & Small Pool	Wet 'n' Wild
3.00pm - 4.00pm Main & Small Pool	Casual Swim
4.00pm - 6.00pm Main Pool	Casual Swim
7.15pm - 9.15pm Main Pool	Casual Swim
9.15pm - 10.00pm Main Pool	Lane Swim

THURSDAY	
6.30am - 9.15am Main Pool	Lane Swim
9.00am - 10.00am Small Pool	Casual Swim
9.15am - 10.00am Main Pool	Aqua Fit
10.00am - 11.00am Small Pool	L2S Kids Crash Course
10.00am - 12.00pm Main Pool	Casual Swim
11.00am - 12.00pm Small Pool	Casual Swim
12.00pm - 1.30pm Small Pool	Under 8's Fun Swim (0.6m depth)
12.00pm - 1.30pm Main Pool	Lane Swim
1.45pm - 2.45pm Main & Small Pool	Under 16's Free Swim
3.00pm - 4.30pm Main & Small Pool	Casual Swim
4.30pm - 6.00pm Main Pool	Casual Swim
6.00pm - 7.00pm Small Pool	Casual Swim
6.00pm - 7.30pm Main Pool	Casual Swim
6.30pm - 7.30pm Main Pool	Masters Swim
7.00pm - 7.30pm Small Pool	Aqua HIIT
7.30pm - 8.15pm Small Pool	Aqua Jog
7.30pm - 9.00pm Main Pool	Casual Swim
9.00pm - 10.00pm Main Pool	Lane Swim

FRIDAY	
6.30am - 9.00am Main Pool	Lane Swim
9.00am - 10.00am Main Pool	Aqua Fit
10.00am - 11.00am Small Pool	L2S Kids Crash Course
10.00am - 12.00pm Main Pool	Casual Swim
11.00am - 12.00pm Small Pool	Casual Swim
12.00pm - 1.30pm Main Pool	Lane Swim
12.00pm - 1.30pm Small Pool	Under 8's Fun Swim (1m depth)
1.45pm - 2.45pm Main & Small Pool	Under the Sea Pool Party
3.00pm - 4.30pm Main & Small Pool	Casual Swim
4.30pm - 6.00pm Main & Small Pool	Casual Swim
6.00pm - 8.00pm Small Pool	Casual Swim
8.00pm - 10.00pm Main Pool	Lane Swim

SATURDAY	
8.00am - 9.30am Main Pool	Lane Swim
12.30pm - 1.15pm Main & Small Pool	Casual Swim
1.30pm - 2.30pm Main & Small Pool	Wet 'n' Wild
3.00pm - 4.00pm Main & Small Pool	Wet 'n' Wild
4.00pm - 7.00pm Main & Small Pool	Pool available for hire

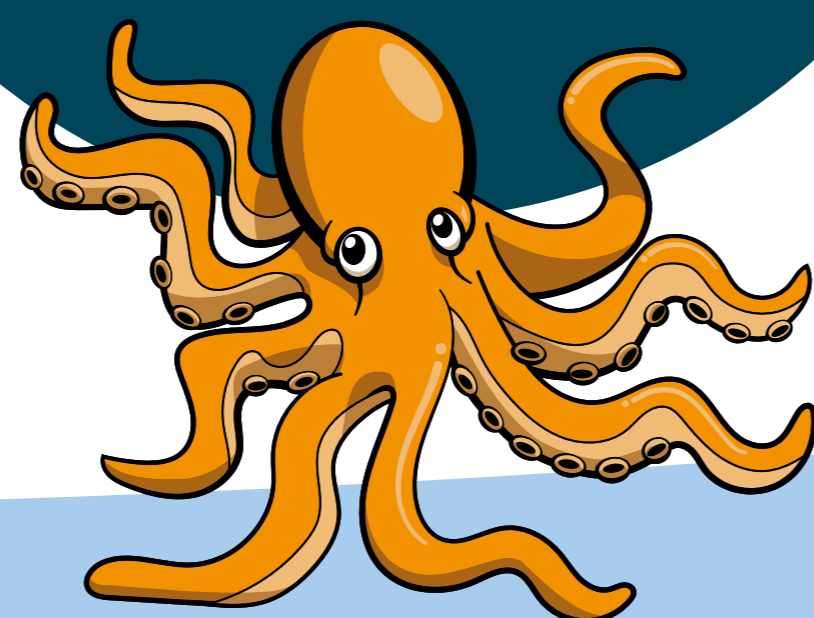
SUNDAY	
8.00am - 9.30am Main Pool	Lane Swim
8.30am - 9.30am Small Pool	Under 8's Fun Swim (1m depth)
9.30am - 11.00am Main & Small Pool	Casual Swim
11.00am - 12.30pm Main & Small Pool	Casual Swim
12.30pm - 2.00pm Main & Small Pool	Casual Swim
2.00pm - 3.00pm Main & Small Pool	Disability Swim
3.00pm - 4.00pm Main & Small Pool	Wet 'n' Wild

Flume opening times	
Monday	1.45pm - 4.00pm
Tuesday	1.45pm - 4.00pm 6.30pm - 9.00pm
Wednesday	1.45pm - 6.00pm
Thursday	1.45pm - 7.30pm
Friday	1.45pm - 6.00pm
Saturday	12.30pm - 4.00pm
Sunday	9.30pm - 4.00pm

**UNDER THE SEA
POOL PARTY
FRIDAY
1.00pm - 2.30pm**

**LAST
MINUTE
LANES
50% OFF
MONDAY - FRIDAY
9.30pm - 10.00pm**

**LEARN2SWIM
CRASH COURSE**
MONDAY - FRIDAY
10.00am - 11.00am
SMALL POOL**



• Pool admissions policy applies to all sessions
• Please note - pre-booking is advised for all fitness classes
• Wet 'n' Wild - All children must complete a 50m swim test before being allowed onto the pool inflatable, and only under 16's allowed on the inflatable
* Free swim only available with a valid Leisure Card, you can register online or in centre anytime
**To book onto the Learn 2 Swim Crash Course, please speak to reception or contact northwichMC@brioleisure.org